

EE meets EP

Helmholtz Earth and Environment meets the
European Parliament and Stakeholders in Brussels

Representatives of all seven Helmholtz Earth and Environment Centres
Key messages and contact info

Seven Helmholtz Centres are collaborating in the Helmholtz Research Field "Earth and Environment" to gather deep insights into the complex processes that take place on our planet. The researchers at Helmholtz are enthusiastic about participating in discussions regarding Earth and environmental research and are prepared to play a significant role in dialogues that connect scientific understanding with policy making.

Dr. Almudena García-García

Helmholtz Centre for Environmental Research (UFZ)
Remote Sensing

+49 176 345 396 84
almudena.garcia-garcia@ufz.de

"Earth observations and models are key for understanding changes in weather and climate extremes, and the lack of this knowledge jeopardize the success of adaptation and mitigation measures."

David Mengen

Forschungszentrum Jülich (FZJ)
Institute of Bio- and Geosciences — Agrosphere

+49 246 161 90 37
d.mengen@fz-juelich.de

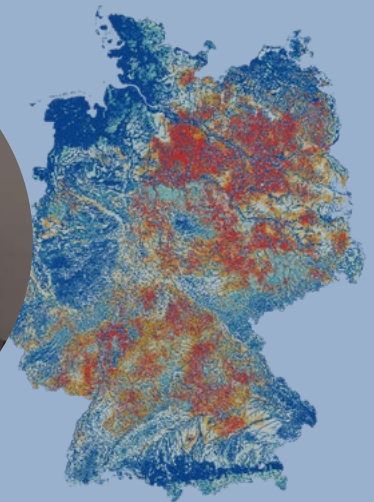
"Already now, it is no longer enough to simply react to droughts caused by climate change. Instead, we need to forecast the regional drought risk and integrate it into operational water resource management practices."

Dr. Martina Klose

Karlsruhe Institute of Technology (KIT)
Institute of Meteorology and Climate Research —
Troposphere Research

+49 72160824230
martina.klose@kit.edu

"Mineral dust, a key type of natural aerosol, will likely increase in importance for future air pollution and solar energy output in Europe due to climate change. Understanding mineral dust processes and impacts is therefore crucial to assess and mitigate environmental health and economic risks in Europe."



Dr. Hanna Joerss

Helmholtz-Zentrum Hereon
Organic Environmental Chemistry
+49 415 287 23 53
hanna.joerss@hereon.de

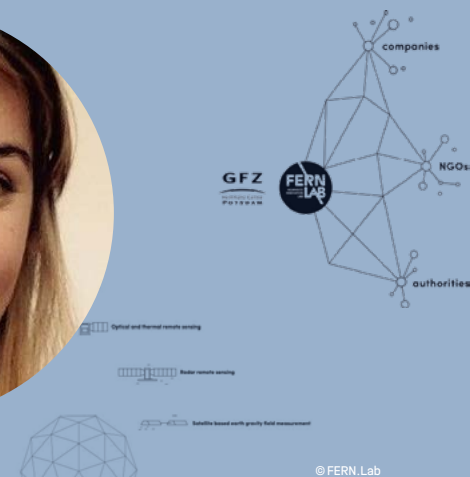
"The controversial European proposal to restrict several thousand PFAS 'forever chemicals' in one go is essential to avoid regrettable substitution of individually regulated chemicals. An advanced analytical toolbox covering a broad range of PFAS will be key for tracking PFAS-related environmental and human health impacts."



Dr. Alison Beamish

Helmholtz Centre Potsdam — GFZ German Research
Centre for Geosciences
Technology Transfer for Remote Sensing
+49 331 626 411 15
alison.beamish@gfz-potsdam.de

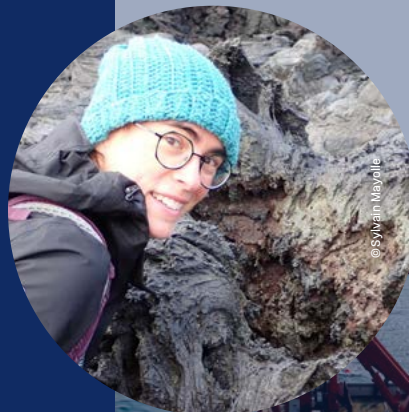
"FERN.Lab is a geoinformation technology and innovation hub. We combine scientific expertise in the field of remote sensing with the social, ecological and economic needs of our time. FERN.Lab bundles extensive competencies along the entire process chain to develop tailor-made remote sensing solutions."



Dr. Séverine Furst

GEOMAR Helmholtz Centre for Ocean Research Kiel
Marine Volcanic Hazards
+49 431 600 22 86
sfurst@geomar.de

"The pressing threat posed by hundreds of active marine and submarine volcanoes in vulnerable coastal regions requires investigation of the submarine part, as it holds the key to addressing and mitigating the significant risks to populations, coastal and offshore infrastructures, maritime routes, and ecosystems."



Dr. Marylou Athanase

Alfred Wegener Institute — Helmholtz Centre for Polar
and Marine Research (AWI)
Climate Dynamics
+49 471 483 11683
marylou.athanase@awi.de

"We now have novel ways to show how climate change affects weather and environmental extremes and to make it tangible for all. Its contribution is already strong, and will amplify without drastic mitigation."



SynCom Koordinierungsbüro
Marie Heidenreich | marie.heidenreich@gfz-potsdam.de
+49 (0)30 206 795 732
Dr Katharina Sielemann | katharina.sielemann@gfz-potsdam.de
+49 (0)30 206 795 730